

MAX HD2

Dual 4G LTE Mobile Router



PEPWAVE
Broadband Possibilities



Dual 4G LTE Mobile Router

The HD2 gives you blazing fast connectivity on the road with dual embedded cellular modems and SpeedFusion bandwidth bonding, plus a built-in 4-port GE switch to reduce clutter in your mobile deployments. It is also Verizon XLTE certified.



Works With

verizon

Sprint

at&t

T-Mobile

And worldwide 4G LTE/3G carriers



Dual Cellular for Multiple Carriers

Dual SIM slots allow you to use the same or different cellular providers for bandwidth bonding or eliminating blind spots.



Fleet Tracking and Management

With built-in GPS fleet tracking and InControl cloud-based management, you can keep tabs on location and manage your mobile network from any Internet-connected device.



Terminal Block for Secure Power Supply

The MAX HD2 is equipped with a terminal block for secure installation in vehicles and other locations.

SpeedFusion
Bonding Technology



SpeedFusion Bandwidth Bonding and Seamless Failover

SpeedFusion bandwidth bonding technology bonds all connected bandwidth into a single superfast stream, using the same or different cellular providers.



Customize Captive Portal

Branding your captive portal is as easy as uploading your logo and terms & conditions. You can easily set bandwidth allowance and access duration per user or manage access using RADIUS.



Certified Toughness

In addition to rugged metal enclosure, HD2 has certifications on:

- Shock and vibration resistance (EN 61373:2010)
- RF Port Lightning Immunity (ITU-T K.20 (+/- 1.5 kV))
- Railway Applications (EN 50155)
- Electromagnetic Compatibility (EN 61000)

Specifications

MAX HD2

WAN Interface

1x USB Interface
2x GE
2x Embedded LTE Modems

LAN Interface

4x GE

Wi-Fi Interface

802.11b/g/n 300 Mbps Wi-Fi WAN and/or AP

Router Throughput

100Mbps

Recommended Users

25-150

Cellular and GPS Antenna Connector

4x SMA Antenna Connectors
1x SMA GPS Antenna Connector
4x 5dBi Wi-Fi Antennas

Power Input

DC Jack/Terminal Block: 10V - 30V, 3A

Power Consumption

25W (max.)

Dimensions

1.6 x 10.2 x 5.6 inches
40 x 260 x 143 mm

Weight

2.65 pounds
1.2 kg

Operating Temperature

-40° - 149°F
-40° - 65°C

Humidity

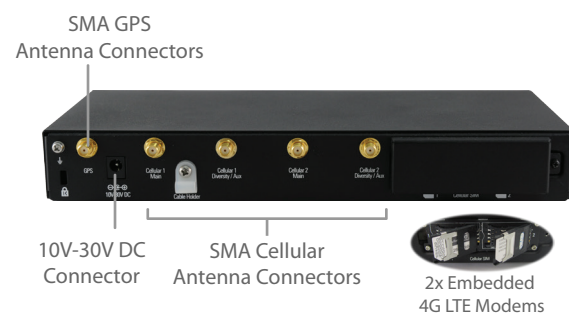
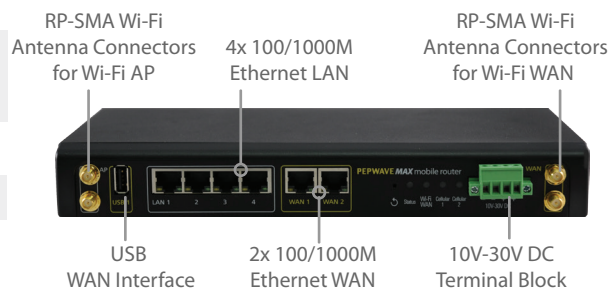
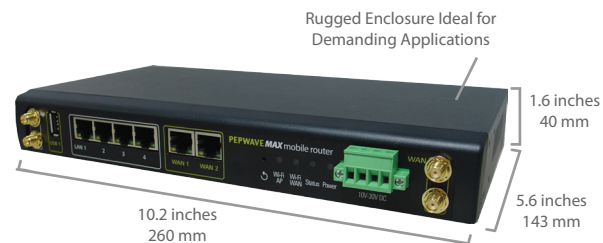
15% - 95% (non-condensing)

Certifications

FCC, CE, RoHS, E-Mark
RF Port Lightning Immunity: ITU-T K.20 (+/- 1.5 kV)
Shock and Vibration Resistance: EN 61373:2010
Railway Applications: EN 50155
Electromagnetic Compatibility: EN 61000

Warranty

1-Year Limited Warranty



Ordering Information

	Product Code	Carrier	Embedded Modem	4G Bands/Frequencies (MHz)	3G Bands/Frequencies (MHz)
4G LTE	MAX-HD2-LTE-US-T	Verizon/Sprint/AT&T/T-Mobile	2	4G LTE: B2/1900, B4/AWS (XLTE), B5/850, B13/700, B17/700, B25/1900	WCDMA/HSPA+/DC-HSPA+: B1/2100, B2/1900, B4/AWS, B5/850, B8/900 EV-DO Rev.A: BC0/800, BC1/1900, BC10/800
	MAX-HD2-LTE-UE-T	Cellular 1: Verizon/Sprint /AT&T/T-Mobile Cellular 2: Europe/International	2	Cellular 1 4G LTE: B2/1900, B4/AWS (XLTE), B5/850, B13/700, B17/700, B25/1900 Cellular 2 4G LTE: B1/2100, B3/1800, B7/2600, B8/900, B20/800	Cellular 1 WCDMA/HSPA+/DC-HSPA+: B1/2100, B2/1900, B4/AWS, B5/850, B8/900 EV-DO Rev.A: BC0/800, BC1/1900, BC10/800 Cellular 2 WCDMA/HSPA+/DC-HSPA+: B1/2100, B2/1900, B5/850, B6/800, B8/900
	MAX-HD2-LTE-E-T	Europe/International	2	4G LTE B1/2100, B3/1800, B7/2600, B8/900, B20/800	WCDMA/HSPA+/DC-HSPA+: B1/2100, B2/1900, B5/850, B6/800, B8/900

Features

WAN

Support for PPPoE, Static IP, DHCP
WAN Link Health Check
Bandwidth Allowance Monitor
USB 4G/3G Modem Support
Support for Dynamic DNS services

LAN

DHCP Server for LAN Clients
Extended DHCP Options
DHCP Reservation
DNS Proxy for LAN Clients
VLAN on LAN Support
Per-Port VLAN Support

Captive Portal Support

Support for Wired and Wireless LAN Clients
Support for RADIUS Authentication
Time and Usage Quotas on Open Access Mode
Built-in Customizable Splash Page

Advanced QoS

User Groups
Bandwidth Reservation
Individual Bandwidth Limit
Application Prioritization
SIP, HTTPS, VPN QoS
Custom Application QoS

Load Balancing

Intelligent Failover
Session Persistence
Per-Service Load Distribution
Multiple Algorithms

Security

Stateful Firewall
DoS Prevention
Web Blocking
Web Filtering Blacklist

Complete VPN Solution

PepVPN/ SpeedFusion Bandwidth Bonding
Site-to-Site VPN
Bandwidth Bonding
Hot Failover
256-bit AES Encryption
Pre-shared Key Authentication
Dynamic Routing
IPsec VPN (Network-to-Network)

Networking

NAT and IP Forwarding
Static Routes
Port Forwarding
Many to One, One to One NAT
NAT Pool
SIP ALG, H.323 ALG
UPnP, NAT-PMP

Device Management

Web Administrative Interface
Command Line Interface
InControl Cloud Management
Email Notification
Active Client & Session Lists
Bandwidth Usage Statistics
Syslog Service
SNMP v1, v2c and v3

Package Content

MAX HD2
12V3A Power Supply
4x 5dBi Wi-Fi Antennas
1x GPS Active Antenna
4x 2dBi 4G LTE Antennas
1 Pair of Mounting Brackets